

Secondary

School Profile 2023/24



Bromsgrove International School Thailand (BIST) is a private, international day/boarding school for the children of Thai and expatriate families, located in the outskirts of Bangkok. The school caters for children between the ages of 2 and 18, and there are currently 480 students of 27 nationalities on roll, 50% of which come from countries other than Thailand. Students from Preschool to Year 1 are on the separate Early Years Campus whilst students from Year 2 to Year 13 are on the Windsor Park Campus.

Admissions Testing

The school conducts admissions screening to determine student placement and appropriate groupings, but this process is predominantly non-selective and we are proud of our inclusive ethos. Additional support is provided for students with learning difficulties and there is broad and intensive provision for students at an early stage of English language acquisition.

Our Curriculum

We offer the National Curriculum for England, whilst incorporating the flexibility to effectively respond to global change. Dependent on their individual circumstances, the Senior School students will study for between 7 and 10 iGCSE subjects from the age of 14-16 (known as Key Stage 4: Year 10-11), and, from 16-18 (known as Key Stage 5: Year 12-13), will complete between 3 and 4 'A' Levels or BTEC qualifications. Students sit for external iGCSE, and A-level examinations. The A-level curriculum is fully recognized by universities worldwide.

6th Form Studies (Key Stage 5)

Students in our Sixth Form will choose a maximum of four A Level or BTEC courses to study. We offer a large number of course options for a school of our size and context, however the structure of our pathways means it is not possible for a student to study all three Sciences, Maths and Further Maths at A Level. In addition to their chosen subjects, students also follow a weekly guidance programme, "BEAM" that consists of life skills, study skills and other important personal and social themes as well as one period a week of Physical Education. Beyond the academic curriculum all students at BIST take part in a minimum of four extra curricular activities a week. Students choose from a diverse and dynamic list of activities ranging from sports and the arts to MUN/debate and environmental activism all supported by purpose-built state-of-the-art facilities. Along with rigorous ECAs including the Duke of Edinburgh's International Award, students participate in various student led charity works throughout the year and attend an annual residential trip as a part of the community service expectation at Bromsgrove.

Bromsgrove Learner Profile Attributes



Determined



Curious



Independent



Kind



Risk Taker



Positive



Team Player



Reflective

Leadership Contact

Headmaster

Dr Dan Moore

headmaster@bromsgrove.ac.th

Head of Secondary

Mrs Rebecca Owens

headofsecondary@bromsgrove.ac.th

Head of Sixth Form

Mr Andrew Hallas

headofsixthform@bromsgrove.ac.th



Secondary

School Profile 2023/24



Subject offered for IGCSE & A-Level/BTEC course

The following subjects are offered in our Key Stage 4 & 5. Students will take 8-10 subjects for IGCSE course for their Year 10-11 and 3-4 subjects for A-level/BTEC study throughout their Year 12-13.

IGCSE (Y10-11) Core Subjects

English Language, English Literature, English as a Second Language, Mathematics, Physics, Biology and Chemistry

IGCSE (Y10-11) Optional Subjects

History, Geography, Computer Science, Business Enterprise, Travel & Tourism, Physical Education, Art, Music, Drama, Media Studies, Chinese, Thai, Spanish, Korean

A-Level BTEC Subject

English Literature, Mathematics, Further Mathematics. Biology, Chemistry, Physics, Art, Economics, History, Geography, Computer Science, Chinese, Drama, Music, BTEC Music, Digital Media Design / BTEC Sport, BTEC Business.

Assessment at BIST

The internal grading system for each subject at BIST for Key Stages 4 and 5 uses the grade criteria for IGCSE and A Level as prescribed by the University of Cambridge and Edexcel Boards UK. This includes both the A* - U the 9-1 grading systems. **At BIST we do not provide GPAs as standard, nor do we have a formalized system of ranking students.**

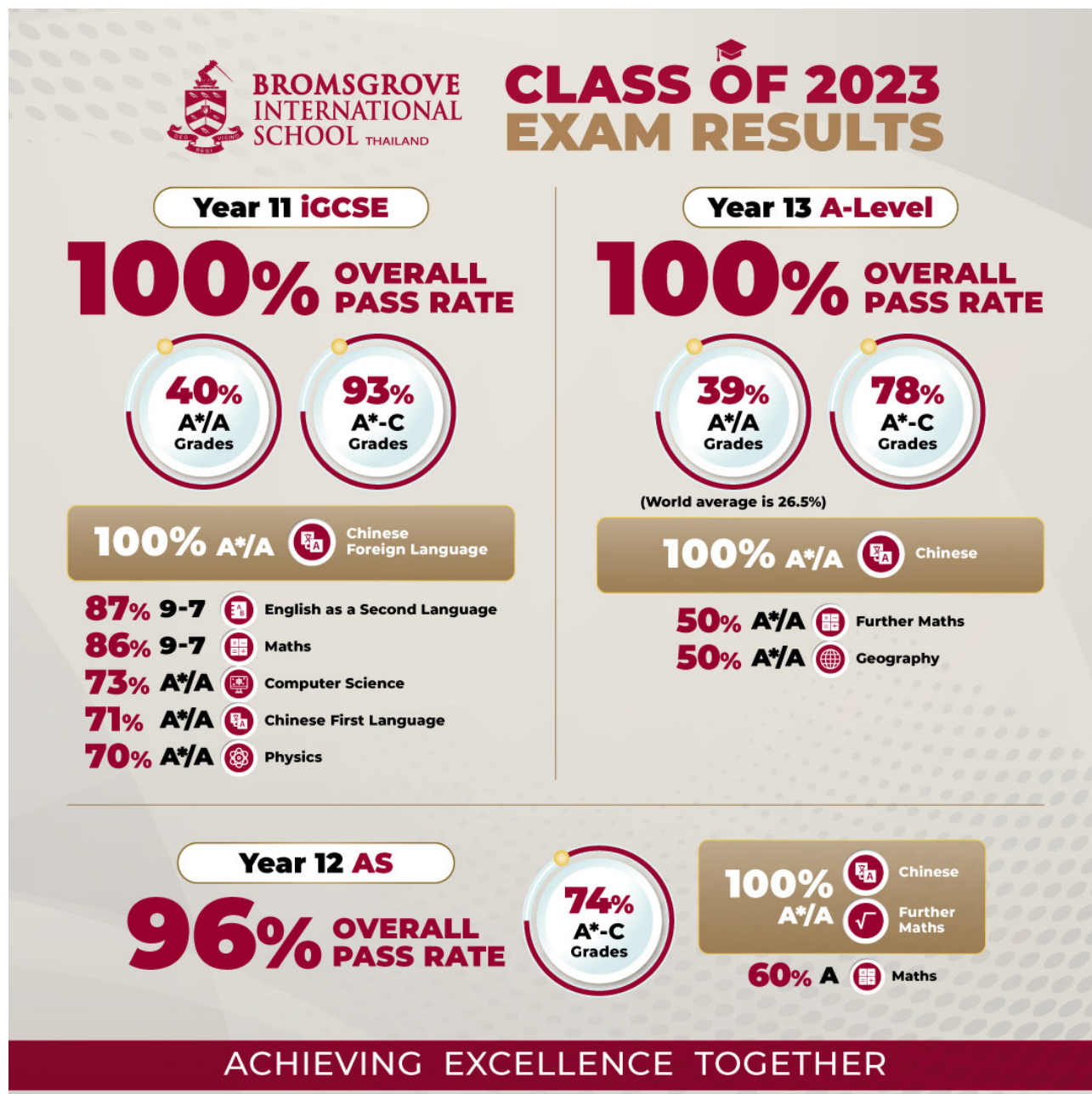


Secondary

School Profile 2023/24



IGCSE & A-Level Exam Results (2023)



Secondary

School Profile 2023/24



University Acceptance 2016-2023

Over last four years, the vast majority of graduates have gone on to study in Higher Education. Here are the colleges and universities in which they have enrolled. Around 50% of students go to Russell Group UK universities, 20% to top Asian universities in Thailand, HK, Korea and Japan and 30% to the rest of the world (including Australia and North America). Acceptance without matriculation is indicated in italics.

- Arts University Bournemouth
- Ball State University
- California State University, Northridge
- Cardiff University
- Chulalongkorn University
- City University of Hong Kong
- Cours Florent School, Paris
- Delaware State University
- Durham University
- Dusit Thani College
- Embry-Riddle Aeronautical University
- Erasmus University Rotterdam
- European University Viadrina
- Falmouth University
- Glion Institute of Higher Education
- Hanze University Groningen of Applied Sciences, Fine Arts Minerva Academy
- Hawai'i Pacific University
- HRH Princess Chulabhorn College of Medical Sciences (PCCMS)
- Imperial College London
- King's College London
- Kingston University London
- Korea University
- Leeds Beckett University
- Les Roches International School of Hotel Management
- London College of Fashion - University of The Arts London
- London School of Economics and Political Science (University of London)
- Loughborough University
- Maastricht University
- Mahidol University International College
- Monash University
- Newcastle University
- Northeastern University
- Pacific International Hotel Management School, New Zealand
- PolyU : The Hong Kong Polytechnic University
- Rangsit University
- SAE Institute
- Semmelweis University
- Sirindhorn International Institute of Technology (SIIT)
- Srinakharinwirot University
- Stamford International University
- Syracuse University
- Thammasat University
- Thammasat - Chulabhorn's International College of Medicine
- The Chinese University of Hong Kong
- The KSA Academy of Performing Arts
- The Royal Central School of Speech and Drama London
- The University of Auckland
- The University of British Columbia
- The University of Edinburgh
- The University of Exeter
- The University of Manchester
- The University of Melbourne
- The University of Sydney
- The University of Warwick
- Tokyo International University
- University College London (UCL)
- University College London Medical School (UCLMS)
- University of Bath
- University of Birmingham
- University of Brighton
- University of Bristol
- University of Cambridge
- University of Canterbury
- University of Dundee
- University of Essex
- University of Glasgow
- University of Groningen
- University of Hawai'i at Manoa
- University of Hong Kong
- University of Illinois
- University of Kent
- University of Leeds
- University of Nottingham
- University of Oxford
- University of Plymouth
- University of Sheffield
- University of Sussex
- University of Warwick
- University of York
- Waseda University
- YONSEI University

Should you wish to know more about the school, or the academic programmes we offer, please do not hesitate to contact Andrew Hallas, Head of Sixth Form headofsixthform@bromsgrove.ac.th or Rebecca Owens, Head of Secondary headofsecondary@bromsgrove.ac.th.

